

MANUFACTURING SPECIFICATION

PRODUCT DESCRIPTION

This Tokyo streetwear outfit consists of four pieces: cargo pants, cropped jacket, tank top and face mask. **The pants** are made using the New Look 6055 pattern in size 10 which has been considerably modified. The outer garment is primarily made from a deep teal, waterproof, polyester microfibre fabric. The pants are lined with a birds eye knit in neon orange except behind the knee pad design. The elasticated waistband has two casings containing 2cm wide elastic. There are seamed scoop pockets on the front which allow for the neon orange lining to be revealed. The front and back have wide openings that sit at upper thigh height; they remain attached at the inner and outer leg seam. Further down the leg on the left there is a 'knee pad' which is a black folded star patchwork constructed from black nylon fabric in an octagonal shape with black rigid tricot knit mesh around the edges. On the right side, there's a gap between the knee section with a black strap that joins them together (on the inner leg seam and outer leg seam). The straps are then joined together with a black buckle which can be undone. The lower part of the pants have been hand printed using sublimation printing on a white microfibre hydra fabric. It has teal and pink sublimation dyes in a spray paint inspired pattern with splattered neon orange pigment paint over the top. It's then decorated with iron on vinyl shapes (pandas, mochi, kanji saying Tokyo and a love symbol) made using a Cricut machine. The bottom of the pants are encased with 2cm wide elastic to secure around the ankles.

The jacket uses the same fabrics as the pants. The jacket has been significantly modified using the Burda 110 Jacket pattern in size 10. The front yoke is shaped like an arch with the front piece made from a sheer black tricot knit fabric. On top of the mesh there's a 5.5cm diagonal strip of the sublimation printed white microfibre fabric applied on with a satin stitch using neon orange thread along the edges. The jacket is easily worn from the opening of a 35cm black chunky open-end zipper at the front of the jacket. The collar piece is a high-neck in the deep teal fabric. The hood is lined with the neon orange fabric and on the outer side has a strip of the sublimation printed microfibre hydra fabric print down the centre and the deep teal on either side. The back yoke is in the teal microfibre fabric, while the back piece features neon orange machine embroidery of "Tokyo" kanji on the black mesh. The outer fabric of the sleeves is in the deep teal and lined with the neon orange which is the same on both arms. They are bell-sleeves and semi-mirror the features of the pants; the right sleeve has 2 straps and buckles to hold the sleeve up and the left sleeve has a strip of mesh across the middle of the sleeve. Both sleeves have casing around the wrists containing 2cm wide elastic.

The crop top is in a stretch black cotton jersey knit and has an elasticated band around the bottom. It has been modified from the Jalie 3247 pattern size 8. The 3 cm wide black elastic is decorated with vinyl images of kanji (saying Tokyo) in white, neon orange and deep teal made on the Cricut machine. The edges of the crop top are elasticated then folded over and stitched using a 4.5mm wide twin needle. The front has a scooped neckline and 3cm wide straps. The back has straps that cross over and attach to the back piece. The right strap has the vinyl kanji feature along the elastic.

The face mask is made from the site Craftpassion.com and cut to the women/teenager size. The outer fabric used is a polyurethane coated jersey knit and the inner is a black cotton jersey knit. It has straps that go around the upper and lower edges and to the ears that are made from a teal fold over elastic. It also has black binding from 2cm wide fold over elastic on the side edges.


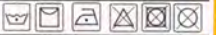
COSTING TABLE

SAMPLES	Item	Itemised cost	Quantity	Cost
Materials				
	Waterproof polyester microfibre deep teal 150cm	\$8.95/m	2.40cm	\$21.48
	Polyester Microfibre White 150cm	\$8.95/m	60cm	\$5.37
	Bird eye knit neon orange 144cm	\$8.95/m	2.8m	\$25.06
	Rigid nylon tricot black 150cm	\$7.95/m	40cm	\$3.18
	Cotton jersey knit black 148cm	\$15.00/m	30cm	\$4.50
	Nylon fabric black 150cm	\$11/m	50cm	\$5.50
	Polyurethane coated jersey knit 150cm	\$14/m	15cm	\$2.10
	Non woven fusible Interfacing	-		From school

Notions				
	Solvay fabric stabiliser	-		From school
	Gutermann deep teal C:870 250m polyester thread	\$7.95	1	\$7.95
	Mettler Poly Sheen 40 orange 800m thread	\$15	1	\$15
	Gutermann white polyester thread 100m	-		From school
	Jenome bobbin thread 501 black	-		From School
	Black zip chunky open end 35cm	\$3.49	1	\$3.49
	2cm Fold over elastic Black	\$1.19/m	38cm	\$0.45
	Cricut in SportFlex Iron-On vinyls teal, white, black	\$27/pack	3	\$81
	Cricut Everyday Mini Iron On Mesh neon pack	\$17/pack	1	\$17
	Buckle side release 25mm	\$5.95m	4	\$23.80
	Straps: white black	\$2.50/m	80cm 1.30 m	\$5.25
	White 1cm wide elastic	-		From School
	Black 3cm wide elastic	\$7/m	1.40cm	\$9.80
	9.5 Rubber elastic	-		From home
	New Look 6055 pattern	\$5	1	\$5
	Jalie 3247 pattern	\$12.98	1	\$12.98
	Mask Pattern	Free	1	Free
	Burda 110 Jacket pattern	\$5.99	1	\$5.99

Total cost \$255.52

CARE LABEL

<p>WOMENS FIT</p> <p>MADE IN AUSTRALIA</p> <p>OUTER: 95% POLYESTER 5% ELASTERMERIC LINING: 100% COTTON</p> <p>CARE INSTRUCTIONS</p> <p>COOL MACHINE WASH LINE DRY COOL IRON DO NOT BLEACH DO NOT TUMBLE DRY DO NOT DRY CLEAN</p> <p></p> <p>Mask</p>	<p>SIZE 10</p> <p>MADE IN AUSTRALIA</p> <p>OUTER: 100% POLYESTER LINING: 90% POLYESTER 10% SPANDEX</p> <p>CARE INSTRUCTIONS</p> <p>COOL MACHINE WASH LINE DRY COOL IRON DO NOT BLEACH DO NOT TUMBLE DRY DO NOT DRY CLEAN</p> <p></p> <p>Pants and Jacket</p>
<p>SIZE 8</p> <p>MADE IN AUSTRALIA</p> <p>100% COTTON</p> <p>CARE INSTRUCTIONS</p> <p>COOL MACHINE WASH LINE DRY COOL IRON DO NOT BLEACH DO NOT TUMBLE DRY DO NOT DRY CLEAN</p> <p></p> <p>Crop Top</p>	

Pattern #	Cut
1	2 (Outer) 2 (Lining)
2	2 (Lining)
3	2 (Outer) 2 (Lining)
4	2 (Lining)
5a	4 of each size (Nylon)
6a	8 (Mesh)
7	2 (Outer)

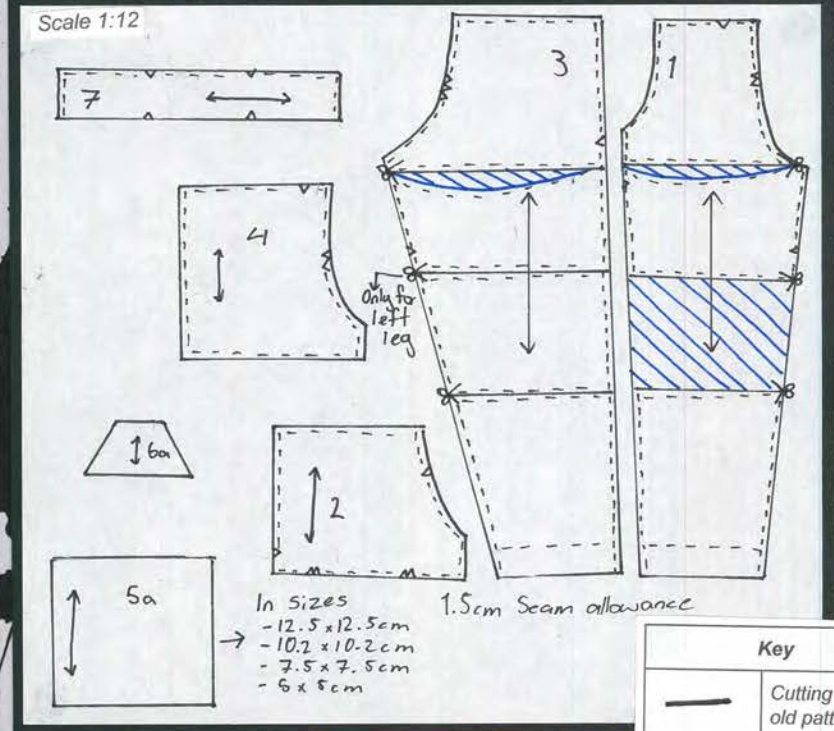
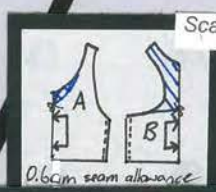
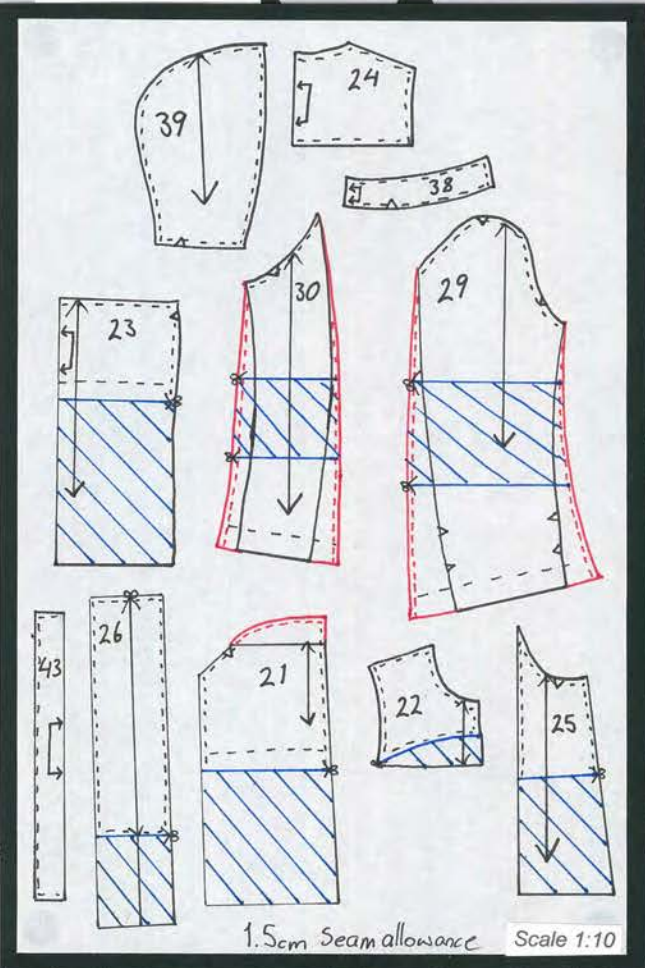
Pattern #	Cut
21	1 (Outer)
22	2 (Outer) 2 (Lining)
23	1 (Outer)
24	2 (Outer) 2 (Lining)
25	2 (Outer) 2 (Lining)
26	1 (Outer)
29	2 (Outer) 2 (Lining)

30	2 (Outer) 2 (Lining)
38	2 (Outer) 1 (Interfacing)
39	2 (Outer) 2 (Lining)
43	1 (Outer) 1 (Lining)

Pattern #	Cut
A	2 (Outer)
B	2 (Outer)

Pattern #	Cut
1a	2 (Outer) 2 (Lining)

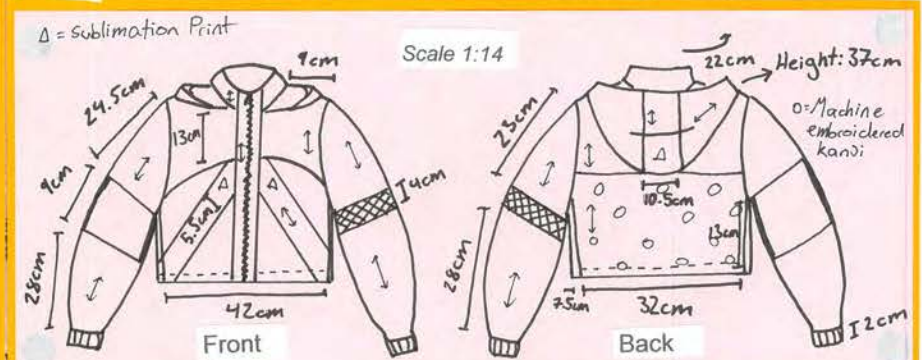
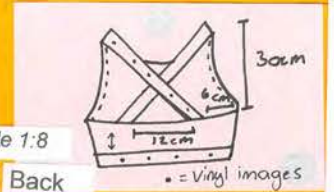
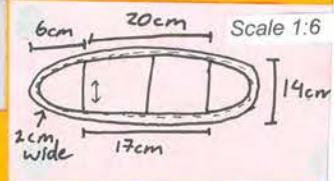
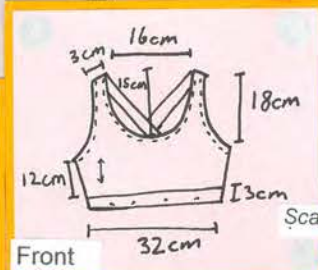
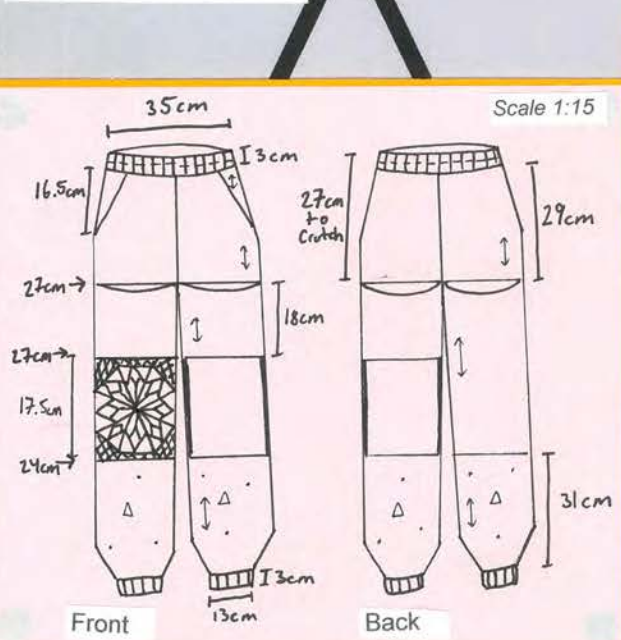
PATTERN PIECES



In sizes
 - 12.5 x 12.5cm
 - 10.2 x 10.2cm
 - 7.5 x 7.5cm
 - 6 x 6cm

Key	
	Cutting line old pattern
	Modifications adding
	Modifications taken away
	Cut pattern
	Cut on fold
	Seam/hem allowance
	Notches
	Grainline

PRODUCTION DRAWING



ORDER OF CONSTRUCTION

PANTS: 1.5cm seams unless stated otherwise.

1. Modify the patterns based off the original pattern.
2. Stitch pieces 1 and 2 together along the curve.
3. Understitch on piece 2 along the curve folded open.
4. Fold right sides together of piece 2 and stitch at the bottom (bottom of the pocket).
5. Fold piece 2 back and line up the notches.
6. Stitch the lining and outer fabric of pieces 1 and 2 together at the top of piece 1 and bottom of piece 2 leaving a gap at the end of around 5cm.
7. Stitch the edges of pieces 1 and 2 together joining the outer fabrics and the lining together.
8. Understitch the lining of the opening on each of the pieces front and back.
9. Iron out the seams and trim the threads.
10. Follow METHOD FROM EXPERIMENTATION for folded star patchwork.
11. Next make a pattern from an octagon shape to attach to the folded star patchwork.
12. Attach each side together by doing a french seam.
13. Line the mesh fabric with the folded star patchwork right sides together and stitch around the edges ending at each seam then stopping and starting again straight after the seam.
14. (The lower part of the leg pattern L side) stitch the right sides together of the outer fabric along the outside seam and of the lining.
15. Line up the (The lower part of the leg pattern L side) with the lining sitting inside the outer fabric, line up the seams and stitch around the top.
16. Fold up the outer fabric at the bottom of the (The lower part of the leg pattern L side) and fold a small section again of the outer fabric with the lining tucked in behind it.
17. Stitch the pieces together of the outer leg seams.
18. Stitch the crotch seam of the outer fabric.
19. Stitch the crotch seam of the lining.
20. Stitch the side outer seams together (of both legs).
21. Base stitch the lining to outer fabric at the top waist.
22. Sew the sides of the waistband together.
23. Sew the waistband to the pants right sides together.
24. Fold-down and iron waistband in half.
25. Hand stitch using an invisible slip stitch the waistband down.
26. Stitch halfway down the waistband, creating two channels.
27. Thread the elastic through each channel (2 in total).
28. Stretch and stitch the elastic and stitch the opening closed.
29. Stitch the straps to either sides of the openings on the left leg and attach the buckles.
30. Hem each of the bottom sections of the leg folding up 4cm and stitching around then thread the elastic through and stitch closed.

Jacket: 1.5cm seams unless stated otherwise.

1. Modify the patterns based off the original pattern.
2. Stitch the top of the bottom left/right sleeve lining and outer fabric together and top stitch on the lining.
3. Sandwich the mesh with the top of the bottom left/right sleeve and stitch.
4. Stitch two gathering stitches at 0.6cm and 2cm on the top curve of the top sleeves (of the outer and lining together).
5. Gather the top part of sleeves between notches and pin to the jacket sleeve arm.
6. Stitch the sleeve on, matching the notches on the armhole.
7. Hem the bottom of the right sleeve.
8. Stitch the white straps onto the right sleeve and attach and stitch close where the buckles are.
9. Iron the vliesofix onto the back of the printed fabric.
10. Cut out the front stripe pattern pieces.
11. Iron the printed stripe pieces of fabric onto either side of the front tricot pieces.
12. Stitch with a satin stitch down along the outside edges of the print on the front pieces (applique).
13. Stitch the lining and the outer fabric of the front yoke by sandwiching the front pieces.
14. Stitch the back and front yokes together at the top (both outer fabric with outer fabric and lining with lining).
15. Machine embroider the kanji onto the back mesh piece.
16. Sandwich the back piece between the back yoke pieces and stitch.
17. Stitch the side hood to the centre piece (both of the outer and lining piece).
18. Stitch the outer hood fabric with the lining of the hood together at the front curve.
19. Understitch the lining edge of the hood.
20. Hand stitch 6 points going down the the centre on the inside attaching the outer fabric to the lining.
21. Stay stitch the hood at the bottom.
22. Stay stitch along the top of the yokes.
23. Stitch the hood onto the top part of yokes.
24. Iron interfacing onto the under collar.
25. Stitch the top of the collar together with both collar pieces.
26. Stitch one side of the collar onto the top part of the yoke.
27. Fold over the other side of the collar and hand stitch down.
28. Fold up and stitch along the front piece (hemming the bottom, 2.5cm hem).
29. Iron interfacing onto the one side of the front strip piece (for both sides of the jacket front).
30. Stitch the front strip pieces onto the front piece going upto the the collar (sandwiching the front piece in between).
31. Stitch the ends of the front strips closed.
32. Stitch the bottom of the back piece folding up 2.5cm for the hem.
33. Sandwich the front piece with both the outer side piece and lining outer side piece and stitch.
34. Then repeat sandwiching the back piece and stitch.
35. Then fold up the bottom of the side pieces and pull through and stitch closed.
36. Fold edges of the front strips and place the zipper inside and stitch the front part down on both sides.
37. Pin the zipper in and stitch on the outside.
38. Hand stitch the inside of the zipper.
39. Connect bias binding by folding and stitching around the edges of the arm sleeve seam.
40. Hem the bottom of the left sleeve by 3cm.

CROP TOP: 6mm seams unless stated otherwise.

1. Modify the patterns based off the original pattern.
2. Cut out pattern pieces.
3. Overlock the side seams with the right sides together.
4. Attach the rubber to the neckline and arm holes and upper part of the back piece by overlocking with elasticator foot.
5. Fold over the rubber and stitch with a twin needle on the right side of fabric.
6. Sew the black elastic to the bottom of the crop top with a twin needle.
7. Attach the black elastic to the top shoulder piece and back neck piece at notches.
8. Overlock shoulder seam and stitch down folded to elastic side.

MASK: 6mm seams unless stated otherwise.

1. Stitch the centre front seam of the nose part on both the outer and lining pieces.
2. Place the right sides together and stitch along the sides.
3. Attach double sided sticky tape to one side of the fold-over elastic and place the elastic to the edge of the lining.
4. Fold the elastic over to the other side and pin in place.
5. Stitch along the edge of the fold-over elastic with twin needle.